

**DIGITAL** **PROJECTION**

A Delta Associate Company

# TITAN LASER

## A LEGEND IS REBORN



Raising the bar once again with  
the 37,000 Lumen 3-Chip TITAN LASER



IP60 Sealed  
Optics



SmartStack  
System



MultiAxis  
Orientation



5 Year / 20,000  
hour Warranty



Projector Control  
Software

[www.digitalprojection.com](http://www.digitalprojection.com)

The Visionaries' Choice

## TITAN Laser – A Legend is Reborn! Unbelievably bright and uniquely robust 3-Chip Laser Projector

The TITAN Laser delivers up to **37,000 Lumens** from a relatively compact chassis, making it the ideal projector for the most demanding of large-venue applications. Our vision was to create a projector capable of producing the brightest, most colour-accurate and pin-sharp images. Compromise has never been an option.

In a class-leading 3-Chip DLP projector, you expect nothing less than the very latest in connectivity, including DisplayPort, HDMI 2.0 and HDBaseT.

Through all-new, state of the art electronics, TITAN Laser delivers all of this and more. HDR processing, Constant Brightness Control and DMX Art-Net compatibility are just some of the new features the TITAN Laser brings to our large venue range.

Our unrivalled experience of optics, electronics and thermal management in 3-Chip DLP projectors has allowed us to create the idea solution for high profile events and fixed installations..

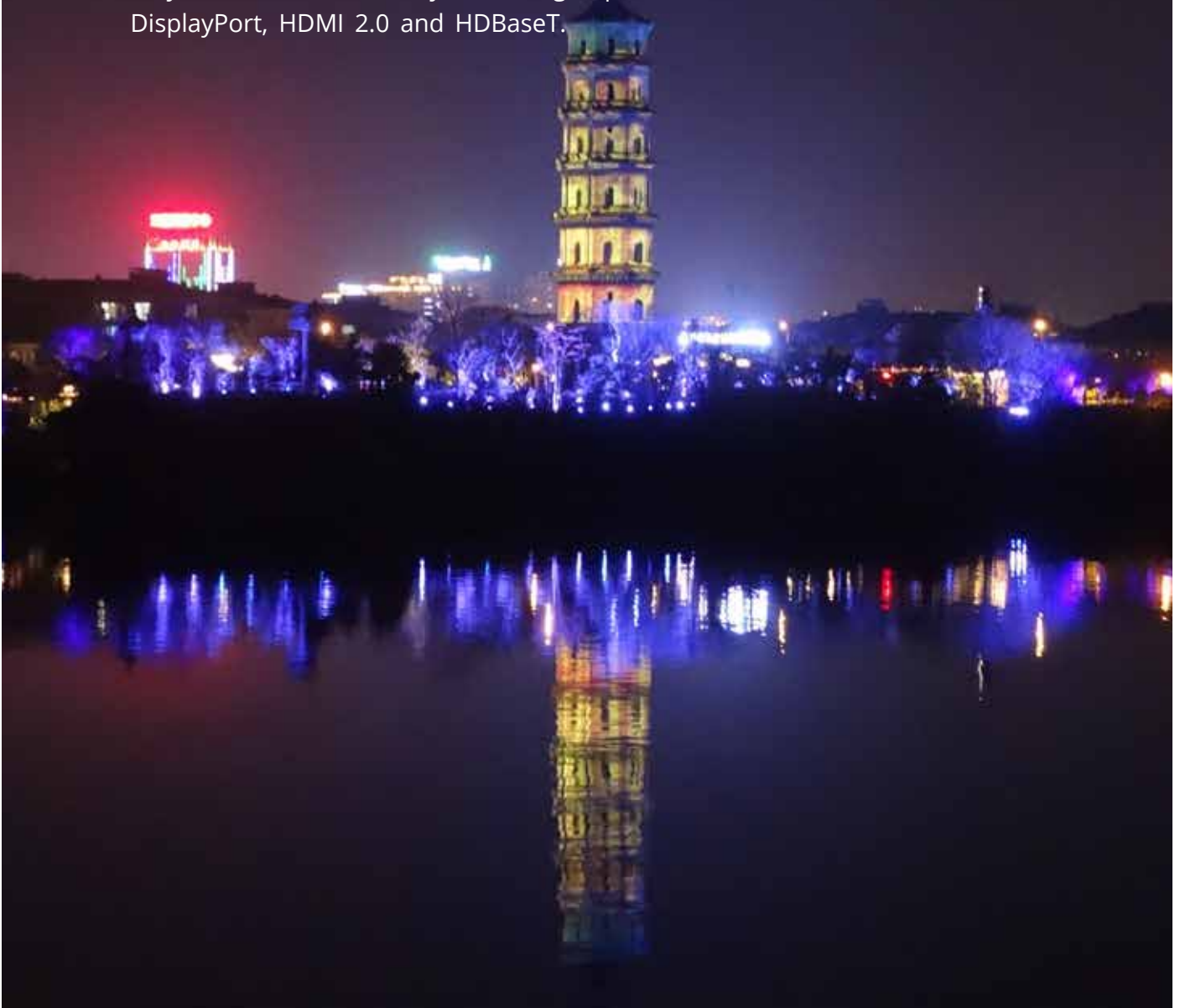


Photo credit: Christina Iberl/  
ETHA International GmbH & Co. KG



TITAN Laser 37000 WU - 37,000 Lumens - WUXGA Resolution  
TITAN Laser 33000 4K-UHD - 31,000 Lumens - 4K-UHD Resolution  
TITAN Laser 29000 WU - 29,000 Lumens - WUXGA Resolution  
TITAN Laser 26000 4K-UHD - 25,000 Lumens - 4K-UHD Resolution

18,000:1 Dynamic Contrast Ratio | WUXGA / 4K-UHD Resolution

## Key Features



### SEALED OPTICS - NO FILTERS

The optical system, from the laser light source to lens is completely sealed and is IP60 rated. This ensures that light output and colour performance will not be degraded due to the ingress of dust. Additionally, this projector is completely filterless as the system is liquid cooled and uses a radiator heat exchanger, minimising maintenance with no replacement or cleaning of filters.



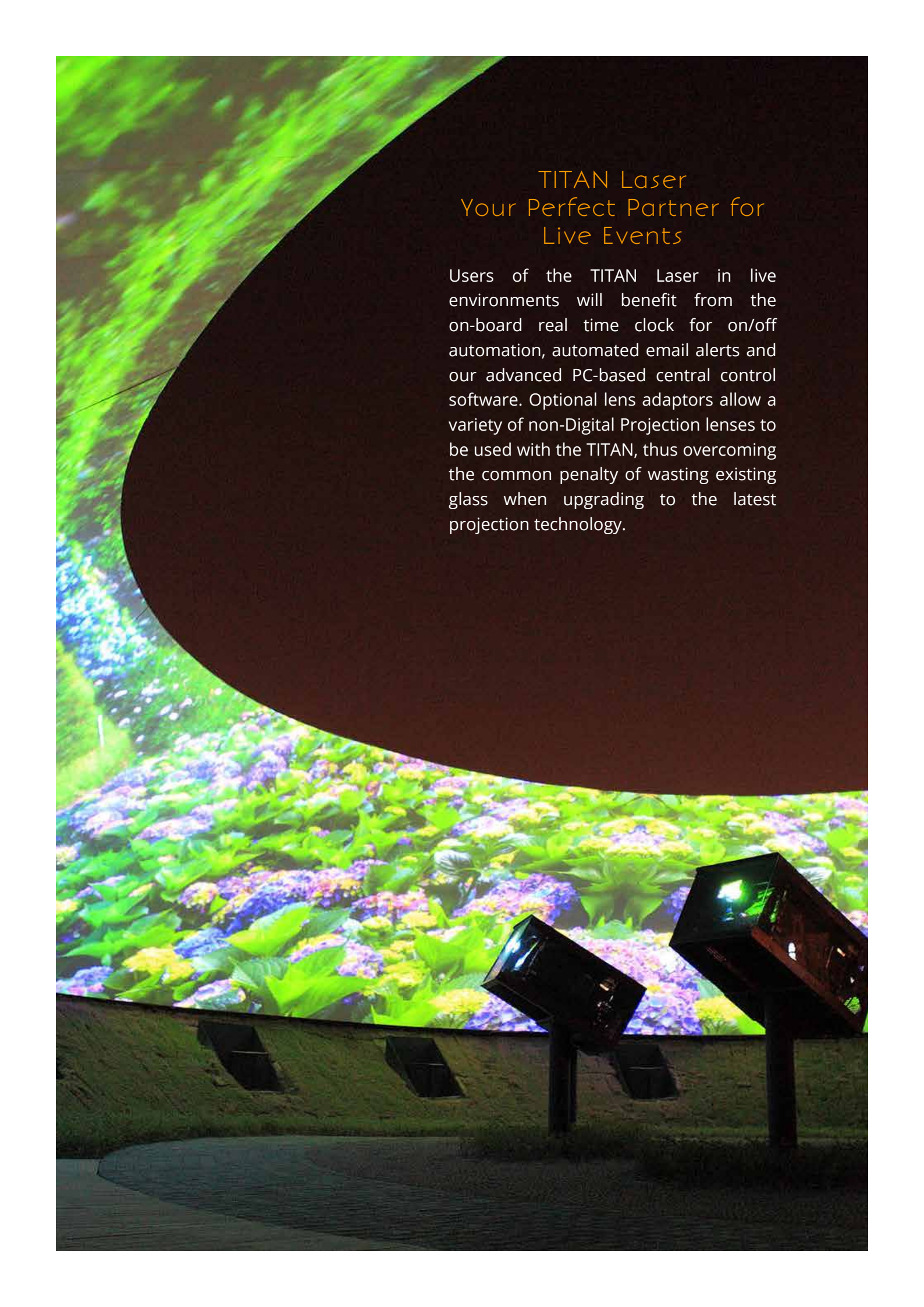
### PROJECTOR CONTROL SOFTWARE

Ideal for use in large installations or where projectors are in multiple locations in a building, the software can dramatically reduce the time required for set up and configuration – all from a single network enabled PC.



### SMART-STACK SYSTEM

The intuitive stacking mechanisms means that TITAN Laser projectors can be lock-stacked without any additional rigging frames or expense.



## TITAN Laser Your Perfect Partner for Live Events

Users of the TITAN Laser in live environments will benefit from the on-board real time clock for on/off automation, automated email alerts and our advanced PC-based central control software. Optional lens adaptors allow a variety of non-Digital Projection lenses to be used with the TITAN, thus overcoming the common penalty of wasting existing glass when upgrading to the latest projection technology.



## Packed with features for the live events industry

The TITAN Laser boasts advanced **Constant Brightness control** which enables light output to be maintained at a pre-set level. The lower the brightness setting the longer the level is maintained.

To ensure that you don't need to completely upgrade your fleet of lenses, the TITAN Laser is also compatible with selected competitor lenses via our advanced lens converter

For maximum flexibility and last minute tweaks, the TITAN Laser also offers Cornerstone, Vertical & Horizontal Keystone, Pincushion & Barrel, Arc and Image Rotation along with Non-linear warp and Digital Zoom, Pan and Scan

## Key Features



### MULTIAXIS ORIENTATION

For maximum flexibility, the TITAN Laser can be operated in both Portrait and Landscape mode, pointing up and down and every angle in between



### INTELLIGENT LENS MEMORY

Intelligent Lens Memory (ILM) feature provides automatic re-positioning of all lens adjustments whenever a user selects sources of varying aspect ratios. Precise and quiet, this advanced capability guides lens zoom, focus and shift to any one of up to 10 user-defined preset locations.



### 5 YEAR WARRANTY

Due to the proven reliability and long-term performance of our laser projectors, Digital Projection provides a full 5 years / 20,000 hours warranty.



# Introducing 100% Sealed Optics

TITAN Laser is not only built to impress, but also to designed to last.

Whilst we don't claim to be the first to offer "sealed optics", we are the first to truly mean it.

The revolutionary IP60-rated optical engine of the TITAN Laser is 100% sealed, from light source to lens, and uses liquid cooling with radiators to remove energy to the outside environment. This means the complete optical system is comprehensively protected against all types of airborne ingress that would otherwise cause image degradation over time. The obvious benefit of IP60 sealed optics is that light output and colour performance will not decay over time, but there are other benefits, too; The filterless design of the TITAN Laser minimises maintenance time and cost, thus increasing system uptime.

Projector



Sealed Optical Engine



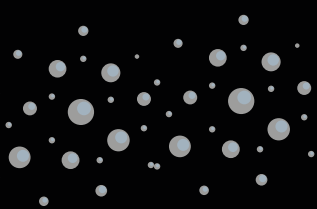
## TITAN Laser Sealed Optics Example

Our unique design does not only seal the laser light module, but the full optical path from laser to lens, ensuring the best possible lifetime of the projector.

## Dust Test Chamber



Chamber exterior



Rigorous testing is undertaken in our specialised Dust Test Chamber (DTC).

We simulate and prove the correlation between dust ingress and brightness decay over long periods of operation and measure the exponential improvement that comes from sealing the optics to IP60 standards. Our DTC is also temperature controlled, allowing us to simulate the widest variety of environments possible



## Smooth Picture 4K-UHD

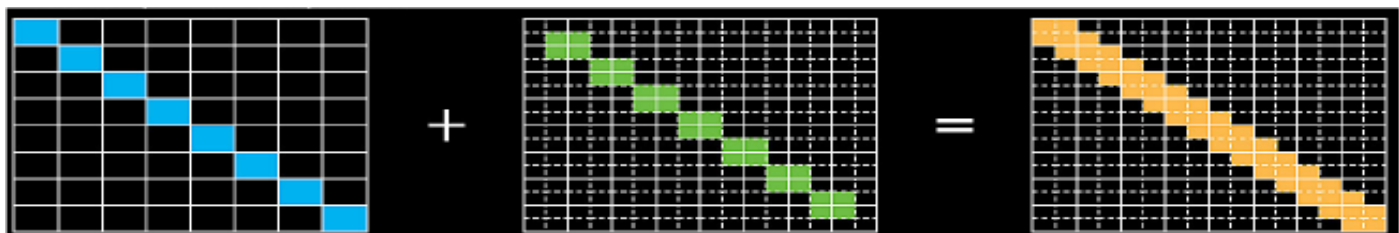
Smooth Picture is a feature that allows the projector to display a higher resolution source than the native resolution of the imaging device within the projector without losing any pixel data. The TITAN Laser's Smooth Picture functionality brings 4K-UHD resolution to the market at an HD price point.

The TITAN Laser's proprietary Smooth Picture technology accurately achieves the globally recognised classifications that define 4K-UHD. Both PMA and CTA clearly state that 8 million pixels must be displayed on-screen to truly classify a display as 4K-UHD, and the TITAN Laser 4K-UHD achieves exactly this. The 4K-UHD standards were defined to counter erroneous claims aimed at fooling users into thinking they were investing in 4K-UHD resolution when in fact they were not.

### How Smooth Picture works?

Smooth Picture technology combines overlapping pixels and extremely fast frame rates. Put simply, multiple sub-frames of data are generated while an optical image shifting mechanism displaces the projected image of each sub-frame by a fraction of a pixel (for example, by one-half or one-third).

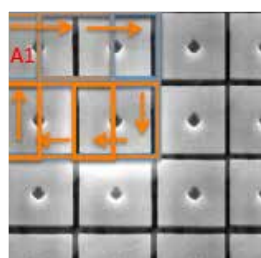
The sub-frames are then projected in rapid succession, and appear to the human eye as if they are being projected simultaneously and superimposed.



## Smooth Picture 4K-UHD and the DMD

As the co-founder of DLP technology, it is at the core of every projector we make. The TITAN Laser is no different and utilises 3 x 0.96" WUXGA DMD™.

The Smooth Picture technology employs a 4-way shift on the WUXGA DMD to create the stunning, life-like 4K-UHD resolution



## SEM Image of the DMD Surface

The image, left, is a Scanning Electron Microscope (SEM) of the surface of a DMD.

The arrows show the direction that each pixel takes to create the Smooth Picture 4K-UHD resolution

# TITAN Laser - Key Features



	TITAN Laser 37000 WU	TITAN Laser 33000 4K-UHD	TITAN Laser 29000 WU	TITAN Laser 26000 4K-UHD
<b>Brightness (Lumens)</b>	37,000	31,000	29,000	25,000
<b>Resolution</b>	WUXGA	4K-UHD	WUXGA	4K-UHD
<b>Technology</b>	Three Chip DLP	Three Chip DLP with Smooth Picture	Three Chip DLP	Three Chip DLP with Smooth Picture
<b>Contrast Ratio</b>	18,000:1	18,000:1	18,000:1	18,000:1
<b>3D</b>	✓	✓	✓	✓
<b>Warp / Blend</b>	✓	✓	✓	✓
<b>Lens Options</b>	3 x Fixed 8 x Zoom	1 x Fixed 8 x Zoom	3 x Fixed 8 x Zoom	1 x Fixed 8 x Zoom
<b>Lens range</b>	037:1 - 10.36:1	037:1 - 10.36:1	037:1 - 10.36:1	037:1 - 10.36:1
<b>Weight (projector only)</b>	95 kg	95 kg	95 kg	95 kg
<b>Power Requirements</b>	200-240VAC	200-240VAC	200-240VAC	200-240VAC
<b>Dimensions (mm)</b>	L: 970 W: 650 H: 398	L: 970 W: 650 H: 398	L: 970 W: 650 H: 398	L: 970 W: 650 H: 398



Global Headquarters  
Digital Projection Limited  
Greenside Way,  
Middleton, Manchester,  
M24 1XX, UK

(P) +44 (0)161 947 3300  
(F) +44 (0)161 684 7674

[www.digitalprojection.com](http://www.digitalprojection.com)



## Global Offices

- > Manchester, UK
- > Atlanta, GA USA
- > Stuttgart, Germany
- > Paris, France
- > Dubai, UAE
- > Fredrikstad, Norway
- > Westervoort, Netherlands
- > Moscow, Russia
- > Beijing, China
- > Guangzhou, China
- > Shanghai, China
- > Singapore
- > Delhi, India
- > Tokyo, Japan
- > Seoul, South Korea